

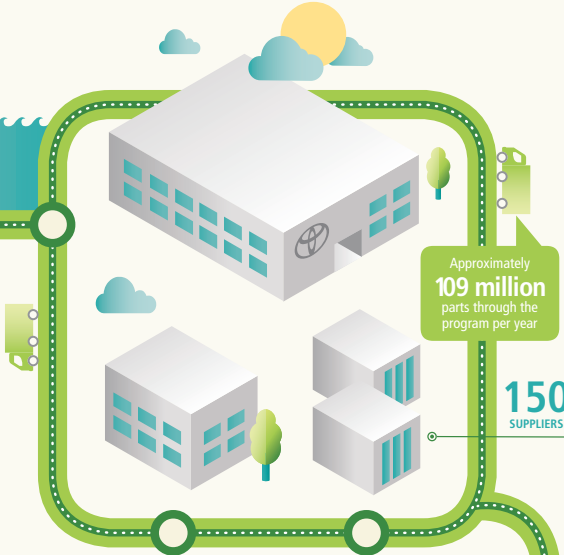
## EVOLUTION OF RETURNABLES

Since 2002, Toyota's parts and accessories returnable container program has saved over 308 million pounds of wood and over \$445 million in packaging costs. These savings equal more resources for the future and lower costs for our parts and accessories.



JAPAN INBOUND

- 1990's  
Parts distribution centers begin using returnables for dealer deliveries
- 2000  
TMC begins using returnable containers to ship parts from Japan to California
- 2002  
North American central parts centers begin using returnable containers to ship service parts to regional parts distribution centers
- 2005  
North American suppliers begin using returnables to ship parts into central parts centers and directly to vehicle distribution centers
- 2013  
Returnables are now used by more than 1850 dealers, 150 suppliers and all 22 North American parts and vehicle distribution centers



Approximately  
**109 million**  
parts through the  
program per year

**150**  
SUPPLIERS

### OVERALL SAVINGS

**308 million lbs** of wood  
**185 million lbs** of cardboard

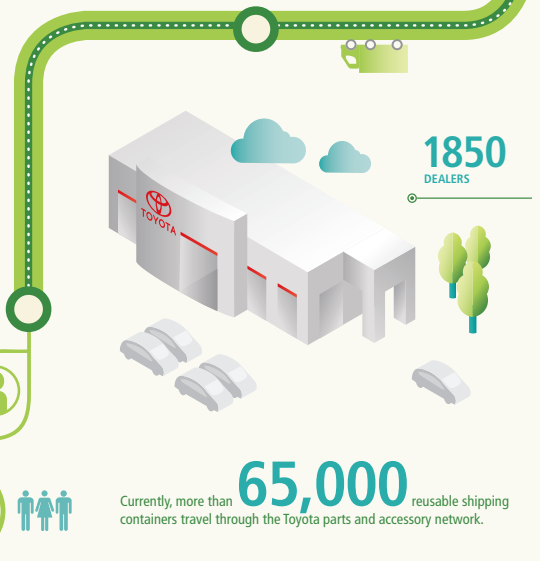


**22**  
PARTS AND  
VEHICLE  
DISTRIBUTION  
CENTERS

That's the equivalent of

**2.5 million trees\***

**\$445 million**  
in packaging costs savings



**1850**  
DEALERS

Currently, more than **65,000** reusable shipping containers travel through the Toyota parts and accessory network.

TOYOTA  
NORTH AMERICAN  
Environmental

\*Environmental impact estimates for cardboard only were made using the Environmental Paper Network Paper Calculator Version 3.2.